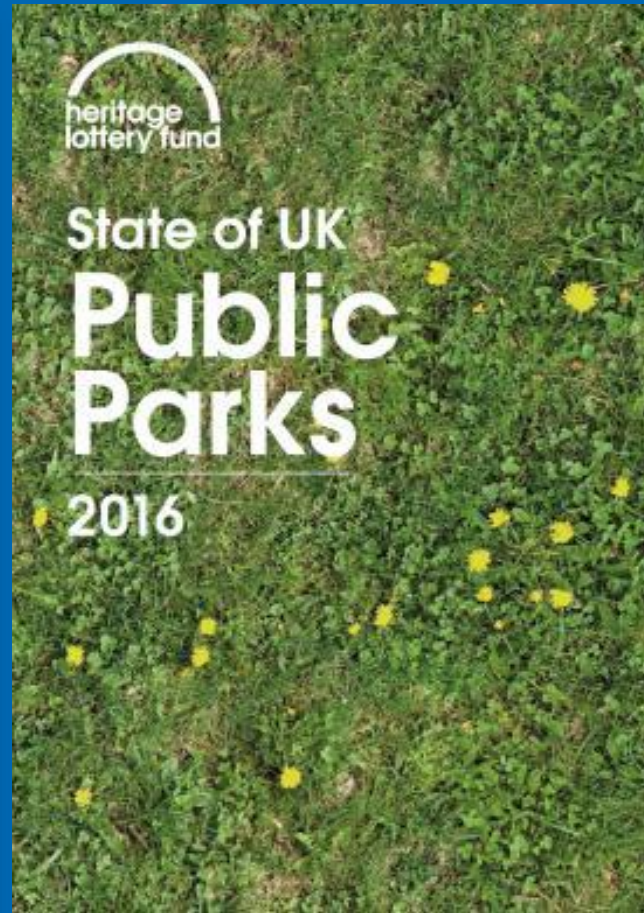


Park Managers Forum

14 December 2016



HLF State of UK Public Parks 2016



www.hlf.org.uk/state-uk-public-parks-2016

#ParksMatter



Search

You are here: Parliament home page > Parliamentary business > Committees > All committees A-Z > Commons Select > Communities and Local Government Committee > Inquiries > Parliament 2015 > Public parks

- ⏪ Committees
- ⏪ All committees A-Z
- ⏪ Commons Select
- ⏪ Communities and Local Government Committee
- ⏪ Inquiries
- ⏪ Parliament 2015
- ↓ **Public parks**
- Publications

Communities and Local Government Committee

Public parks inquiry

Inquiry status: **open**

The deadline for written submissions was 30 September 2016; the Committee will still accept written submissions after that date, but the later they are, the less time the Committee will have to take them into account.

Scope of the inquiry

The Communities and Local Government Committee launches an inquiry into public parks to examine the impact of reduced local authority budgets on these open spaces and consider concerns that their existence is under threat.

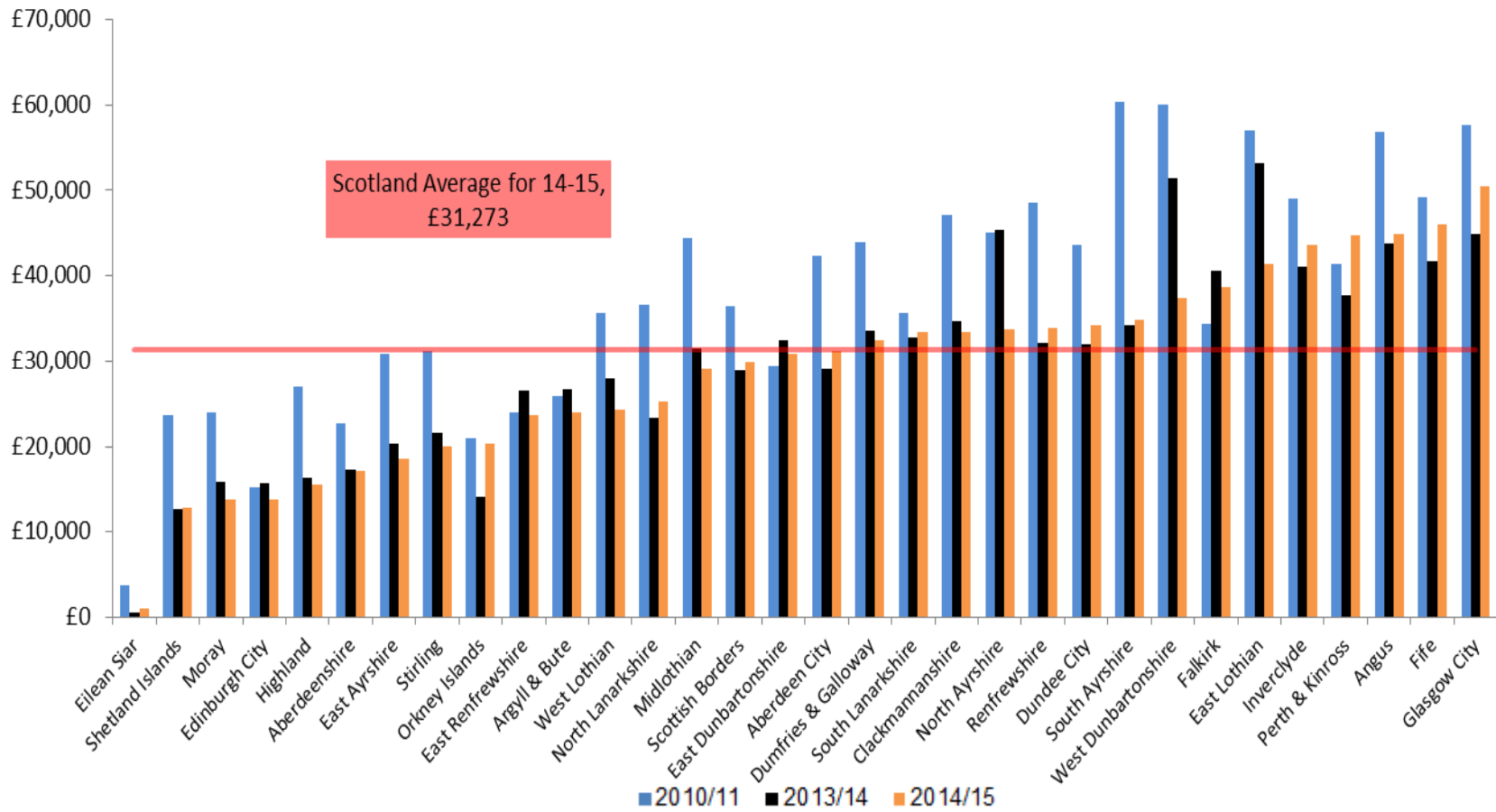
- [Terms of reference: Public parks](#)



Continuing the parks inquiry conversation in Scotland...



Variation across councils – Cost Per 1,000 population



- In 2014/15 the range in costs across councils was from £13,752 to £50,443 (excluding islands).
- On average rural councils have the lowest cost (£20,333) compared with Urban (33,898) and mixed (£33,558)

Park Managers Forum

14 December 2016

